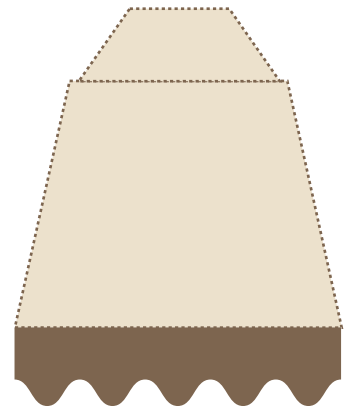
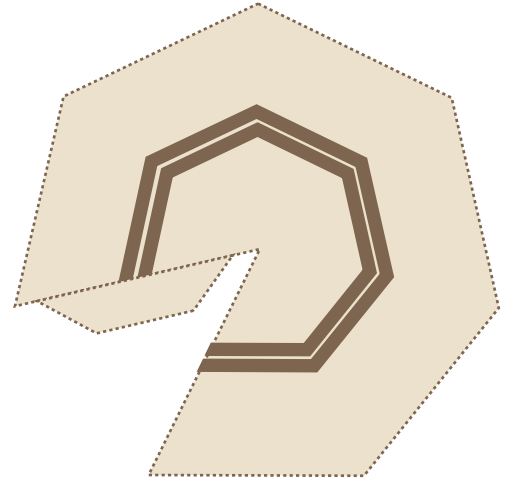
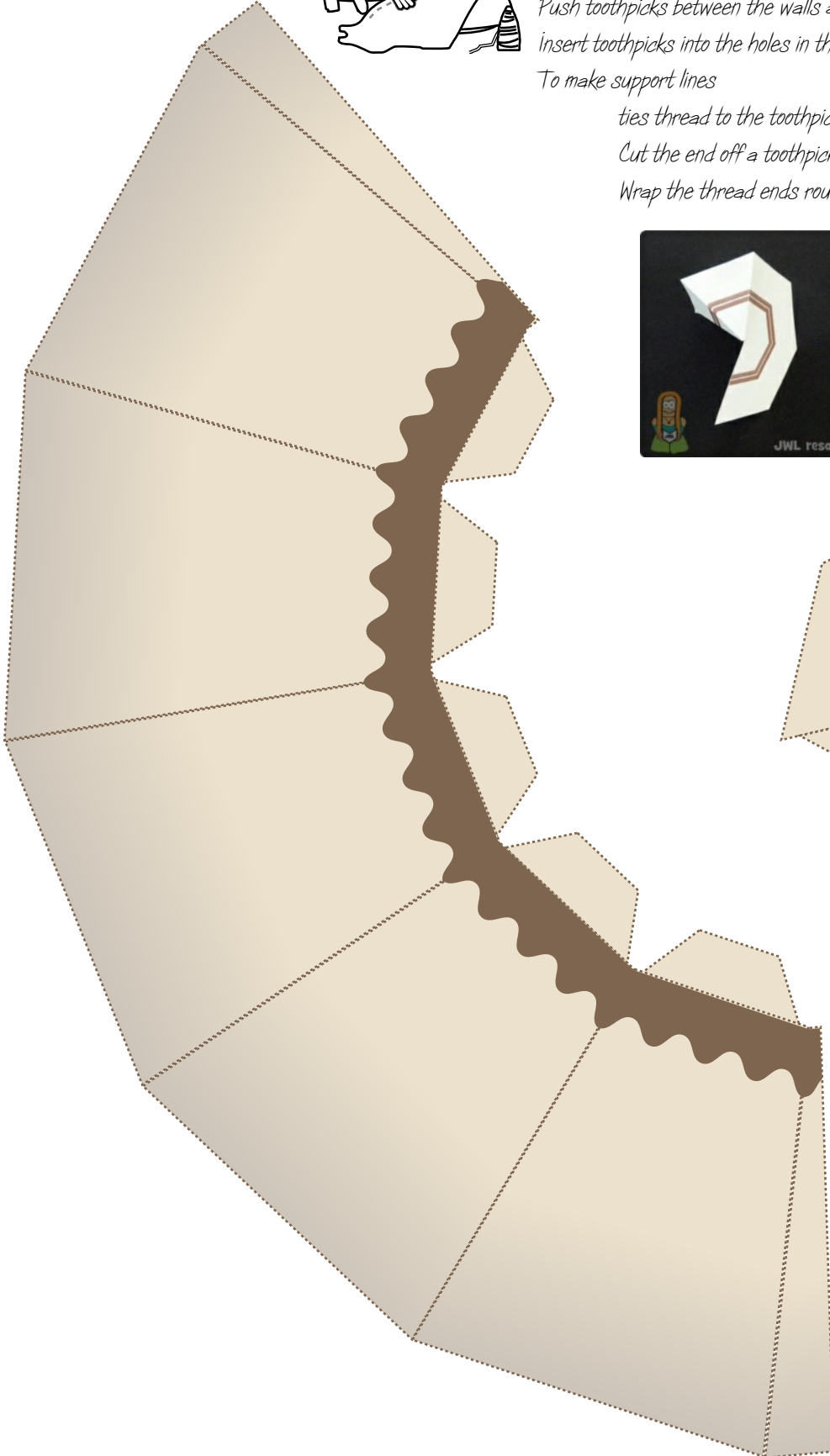


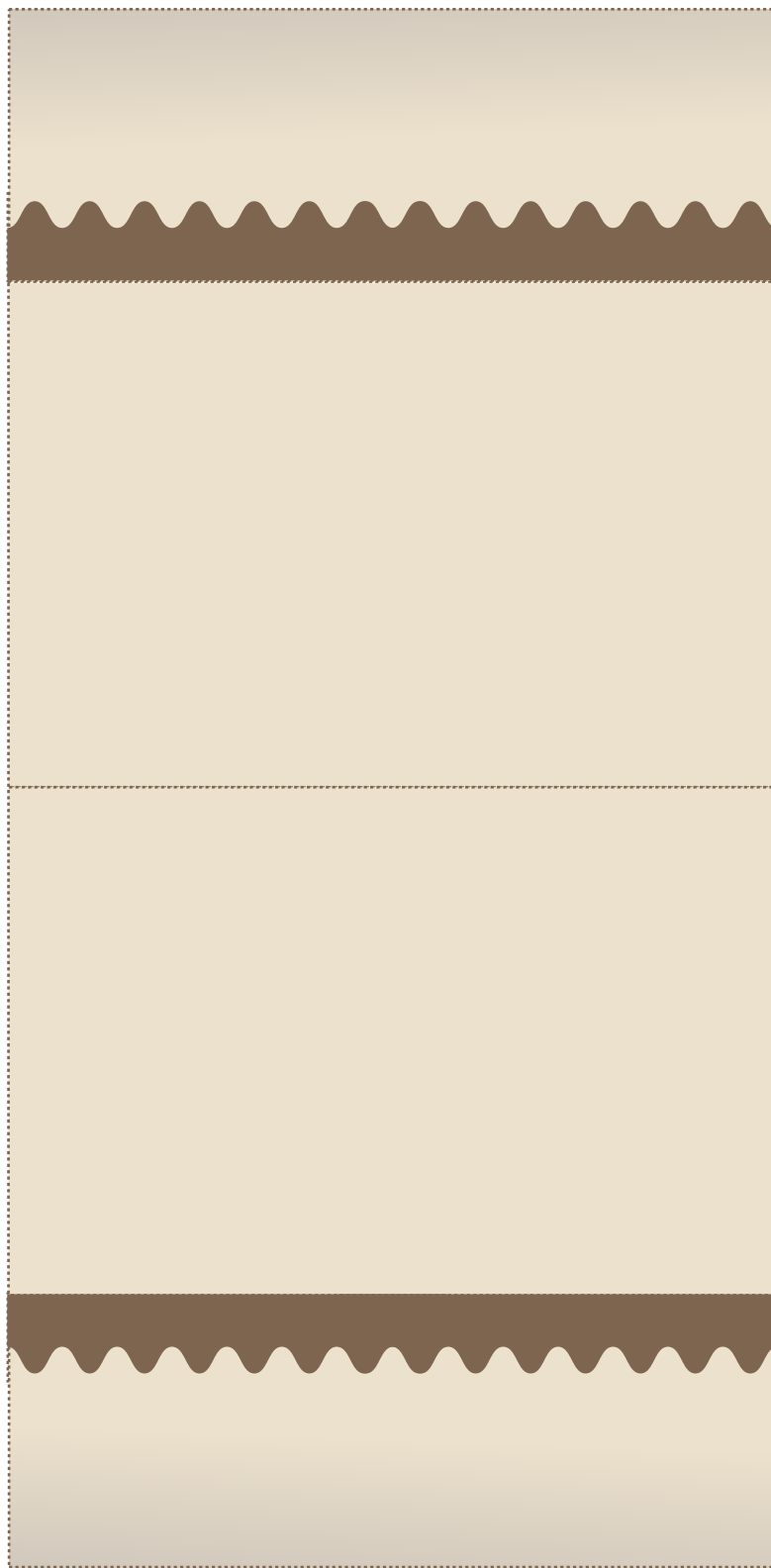
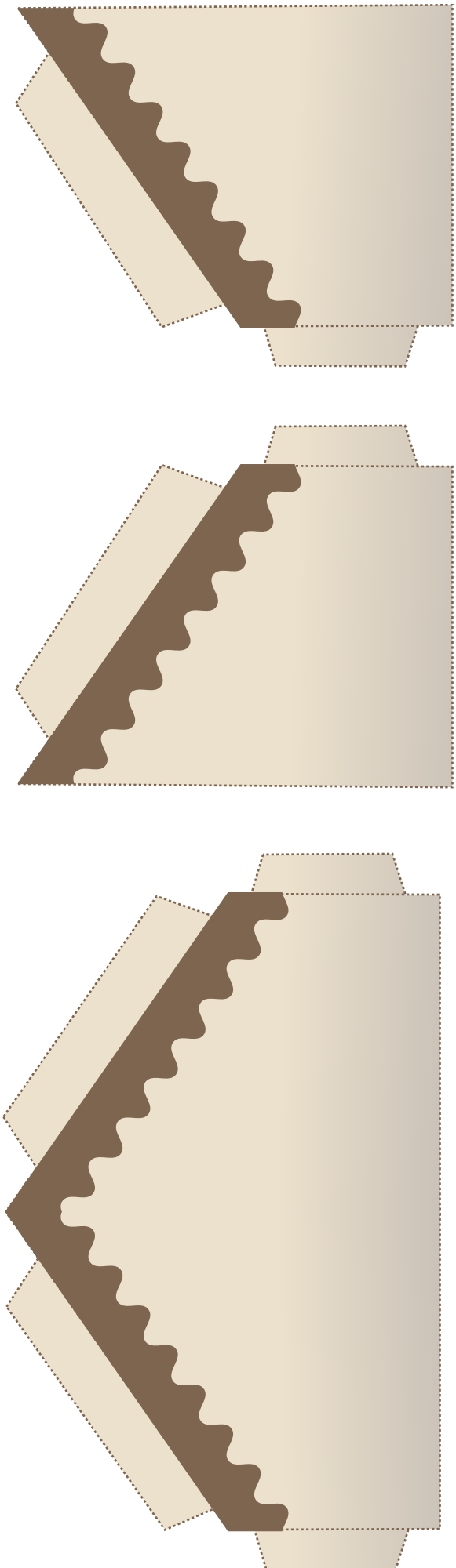


# instructions



- Cut the four shapes out
- Fold the tab on the awning as a valley fold (printed sides together)
- Fold every other line as a mountain fold (blank sides together)
- Fold the top piece into 6 sections to fold a cone like shape
- Make holes for the toothpick supports in the awning using Plasticine and a toothpick
- Glue awning to the roof
- Glue the walls to the roof
- Push toothpicks between the walls and the roof at the corners
- insert toothpicks into the holes in the awning
- To make support lines
  - ties thread to the toothpicks on the tent
  - Cut the end off a toothpick and add a little glue to the blunt end
  - Wrap the thread ends round the toothpick end (peg)





*Cut the four shapes out  
Fold every line as a mountain fold (blank sides together)  
Make holes for the toothpick supports using Plasticine and a toothpick  
Glue the large end onto the main piece  
Gently curve the edges of the tent flaps  
Glue into place  
Insert toothpicks from the underside*

## *Instructions*





*Prepare in advance*

*Cut the shape out*

*Use a pin to make a small hole at the cross*

## *instructions*

*Fold every line as a mountain fold*

*(blank sides together)*

*Add glue the glue tab*

*Glue inside the tent.*

*Put a toothpick into the small hole.*

*Enjoy your simple tent*

*if you wish you can colour the characters*

*& add them into your scene*



